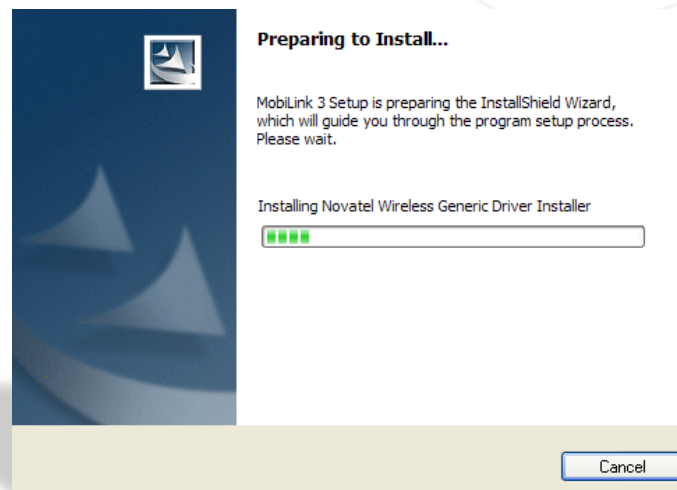




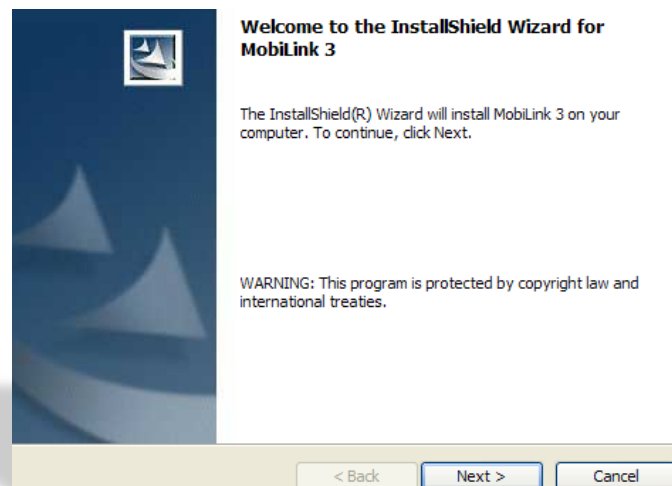
NOVATEL

Dongle Installation for Windows

Plug the dongle, and wait for the **Installation Wizard** to start



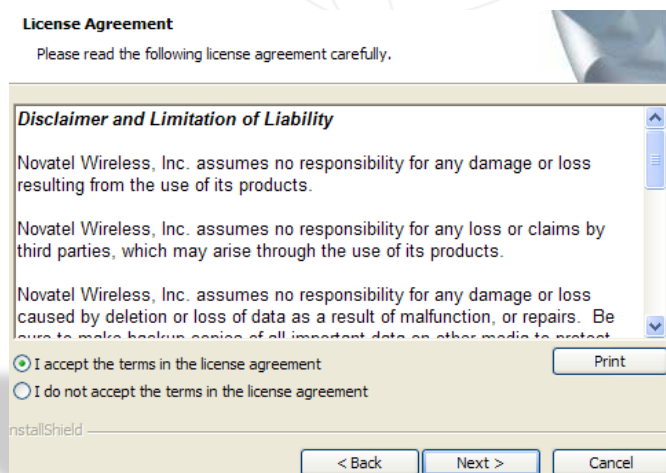
Click **Next**





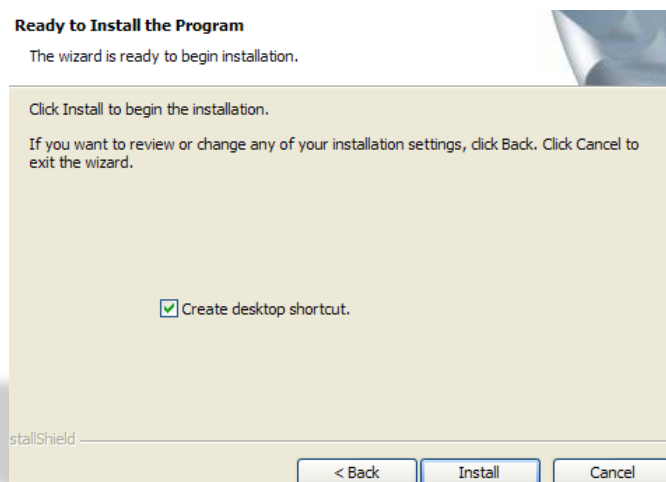
License Agreement window

- Check **I accept the terms in the license agreement**
- Click **Next**



Ready to Install window

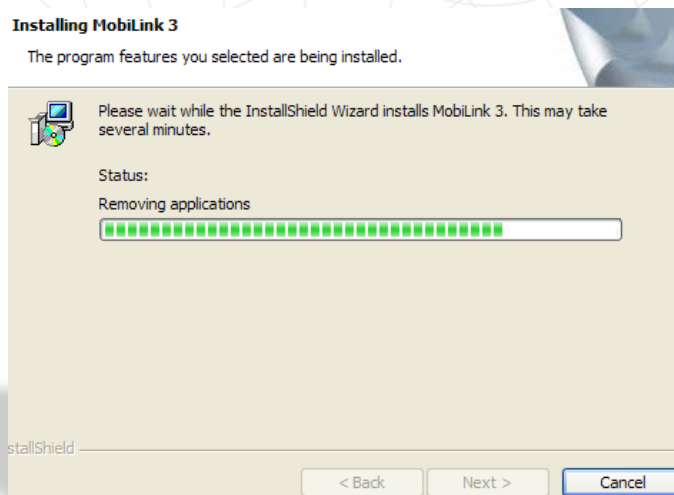
- Click **Install**





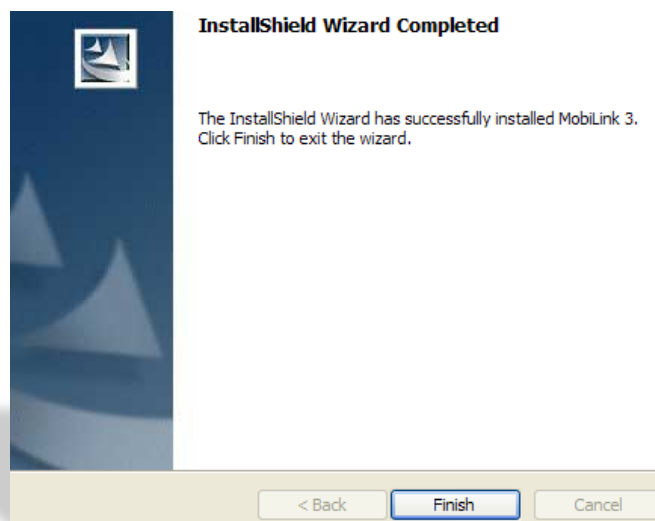
Ready to install window

- Click **Install**
- Wait for installation to finish



Setup complete window

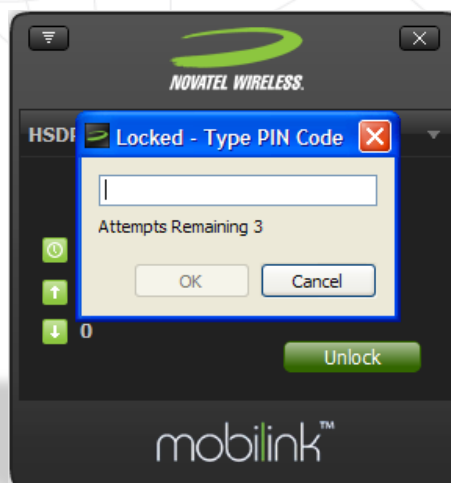
- Click **Finish** and wait for the connection manager to start





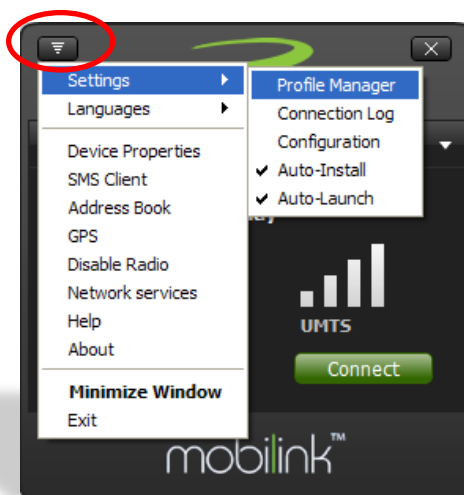
NOVATEL connection manager

- Click **Unlock**
- Enter **PIN code**



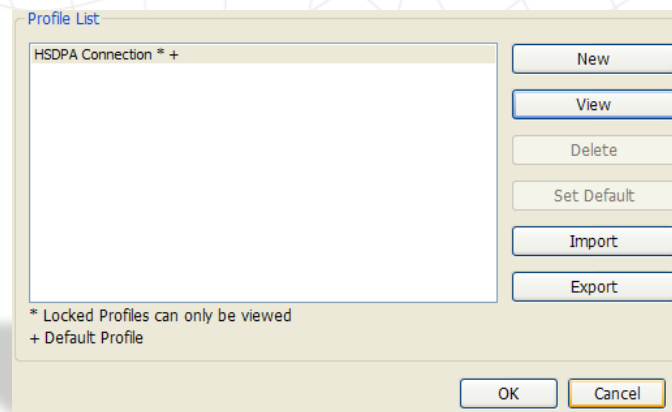
NOVATEL Connection Manager

- Click on the icon in the top left menu
- Select **Settings**
- Click on **Profile Manager**



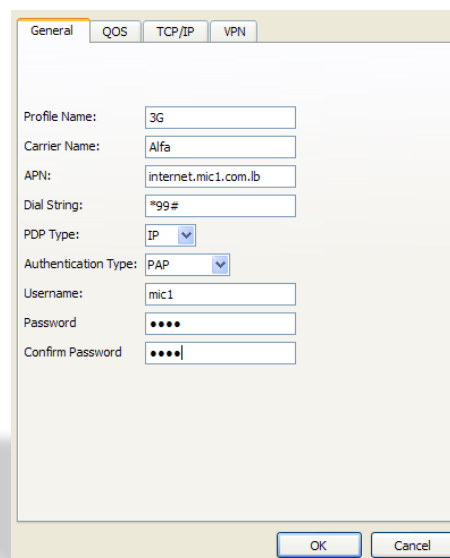
Profile Manager Window

- Click **New**



In the **Pop-Up** window

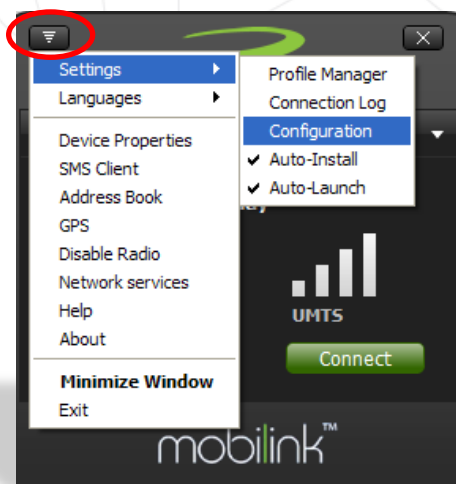
- Profile name: **Alfa 3G**
- Carrier name: **Alfa**
- APN: **internet.mic1.com.lb**
- Authentication Type: **PAP**
- PDP Type: **IP**
- Dial String: ***99#**
- User Name: **mic1**
- Password: **mic1**
- Click **OK** and set the connection to default in the previous window
- Click **OK**





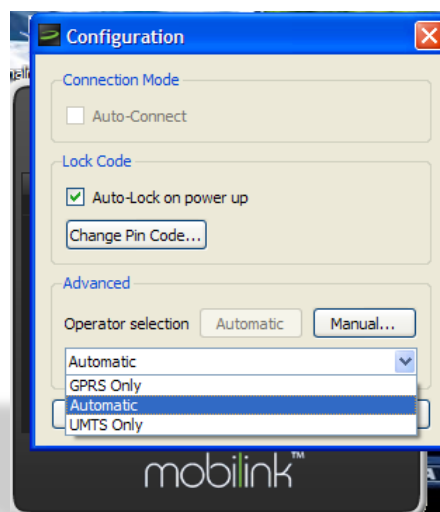
NOVATEL connection manager

- Click on the icon in the top left menu
- Select **Settings**
- Click on **Configuration**



Configuration window

- Choose the required network selection



Dashboard main page

- Click **Connect**