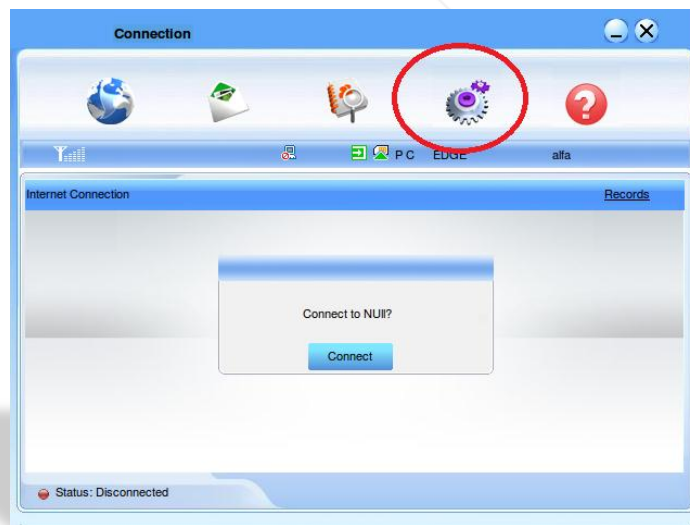




ZTE

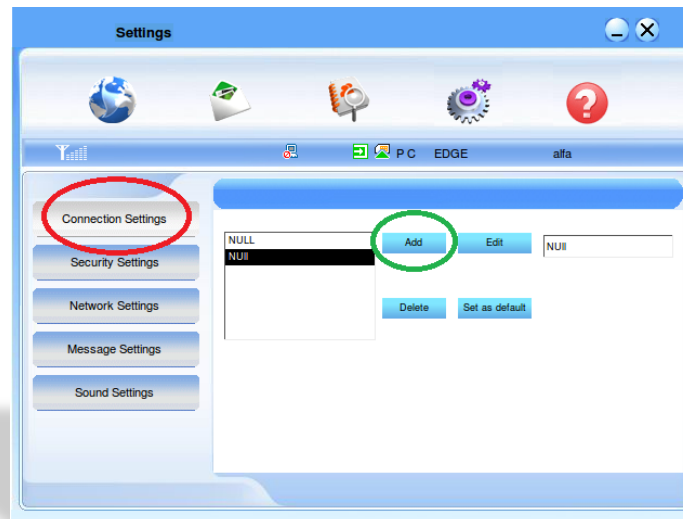
Dongle Installation for Linux

After software installation, Click **Settings** in **Connection** window



Settings window

- Click **Connection Settings**
- Click **Add**





Fill the fields in the **Configuration File** window

- Configuration name: **3G**
- Dial up number: ***99#**
- Click **Save Username and Password**
- Click **Use the following APN name**
- APN: **usb.mic1.com.lb**
- In PDP Type; click **IP**
- In Authentication; click **PAP**
- Click **Obtain DNS address automatically**
- Click **Obtain PDP address automatically**
- Click **OK**

A screenshot of the 'Configuration File' dialog box. The dialog has a blue background and contains several input fields and radio button options. The 'Configuration name' field is set to '3G', 'Dial up number' to '*99#', 'Username' to 'mic1', and 'Password' to '****'. The 'Save Username and Password' checkbox is checked. The 'Obtain DNS address automatically' radio button is selected. The 'Obtain APN address automatically' radio button is selected, and the 'APN' field is empty. The 'PDP Type' section has 'IP' selected. The 'Authentication' section has 'PAP' selected. The 'Obtain PDP address automatically' radio button is selected, and the 'PDP' field is empty. There are 'OK' and 'Cancel' buttons at the bottom.

Configuration File

Configuration name: 3G

Dial up number: *99#

Username: mic1

Password: ****

Save Username and Password

Obtain APN address automatically

Use the following APN address

APN: []

PDP Type

IP

PPP

Authentication

PAP

CHAP

Obtain DNS address automatically

Use the following DNS address

Preferred DNS: []

Alternate DNS: []

Obtain PDP address automatically

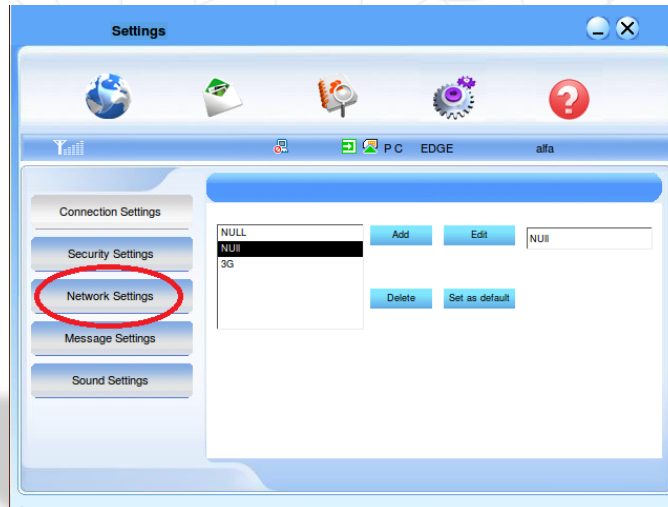
Use the following PDP address

PDP: []

OK Cancel



- **Settings window**
- Click **Network Settings**

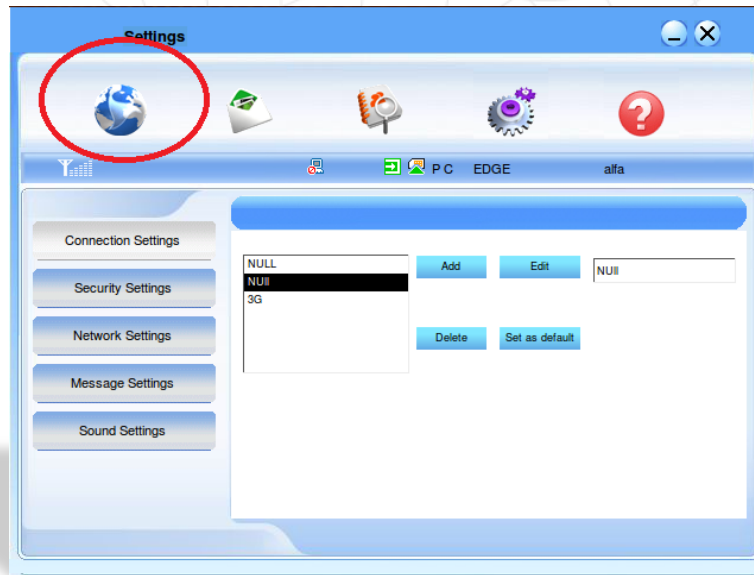


- **Settings window**
- For **Network Selection**; click **Automatic**
- For **Mode preference Selection**; click **Automatic**
- Click **Apply**

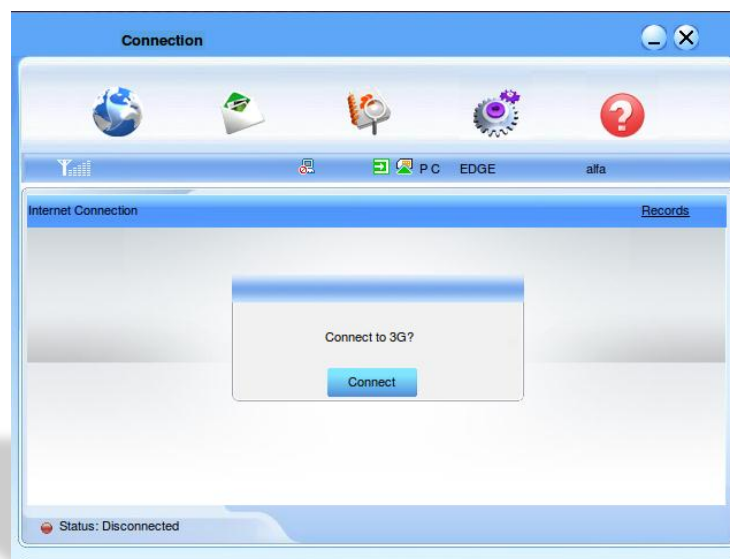




- **Settings** window
- Click the **Connection** button



- **Connection** window
- Click **Connect**



Connected

